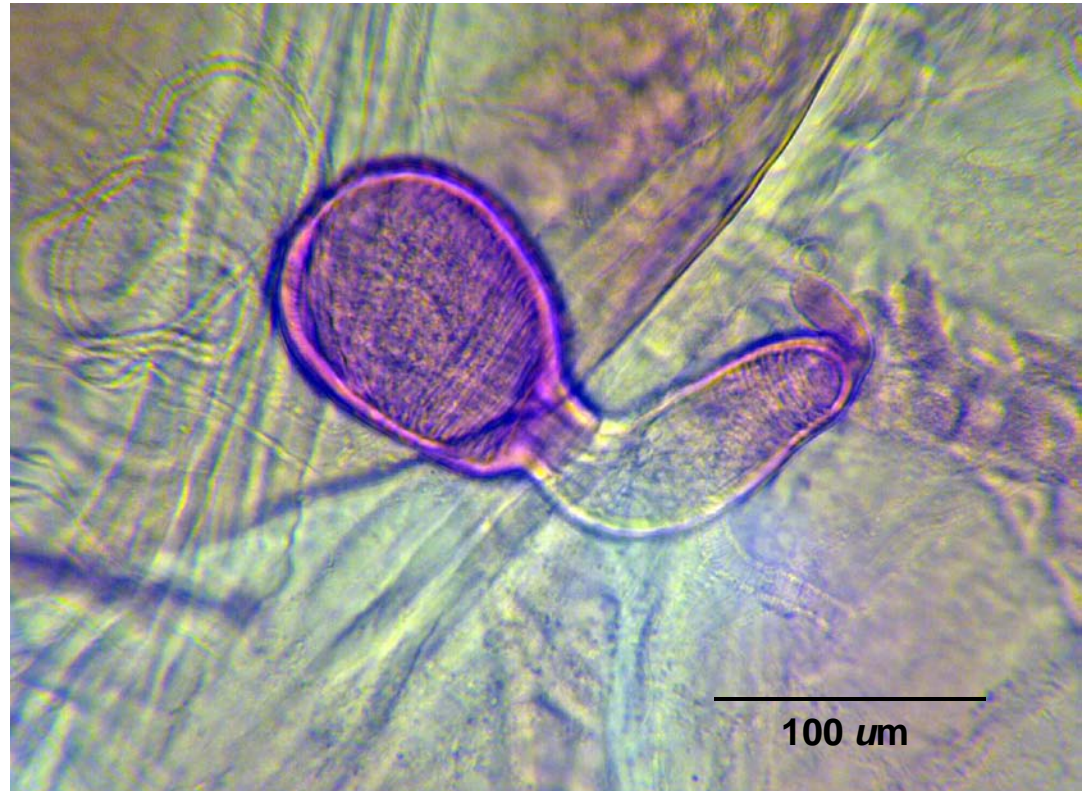


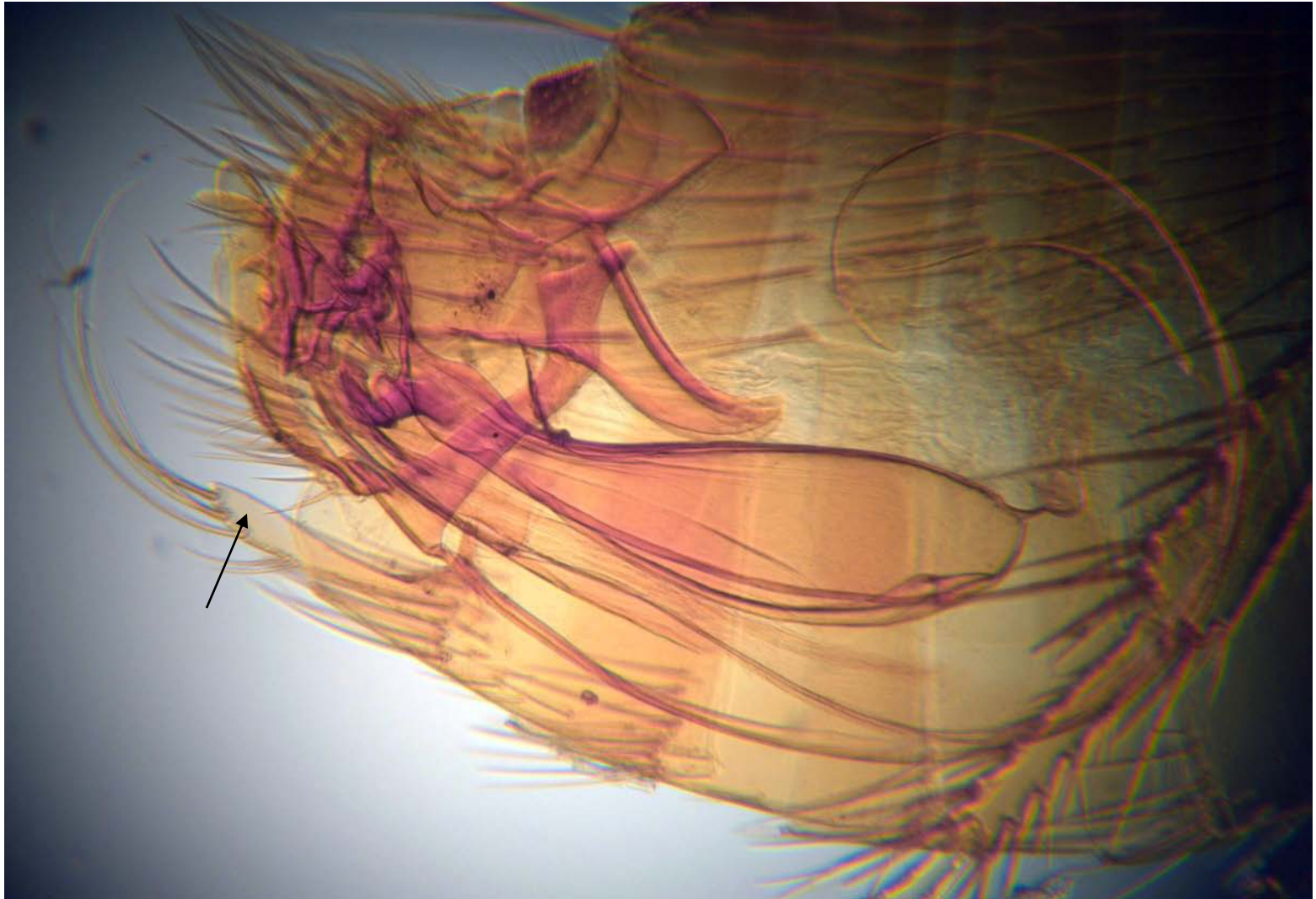
Oropsylla arctomys female (left), male (right). Both photographed at same magnification so relative sizes seen here are accurate.



Oropsylla arctomys female. Posterior with spermatheca (left),
spermatheca enlarged (right).



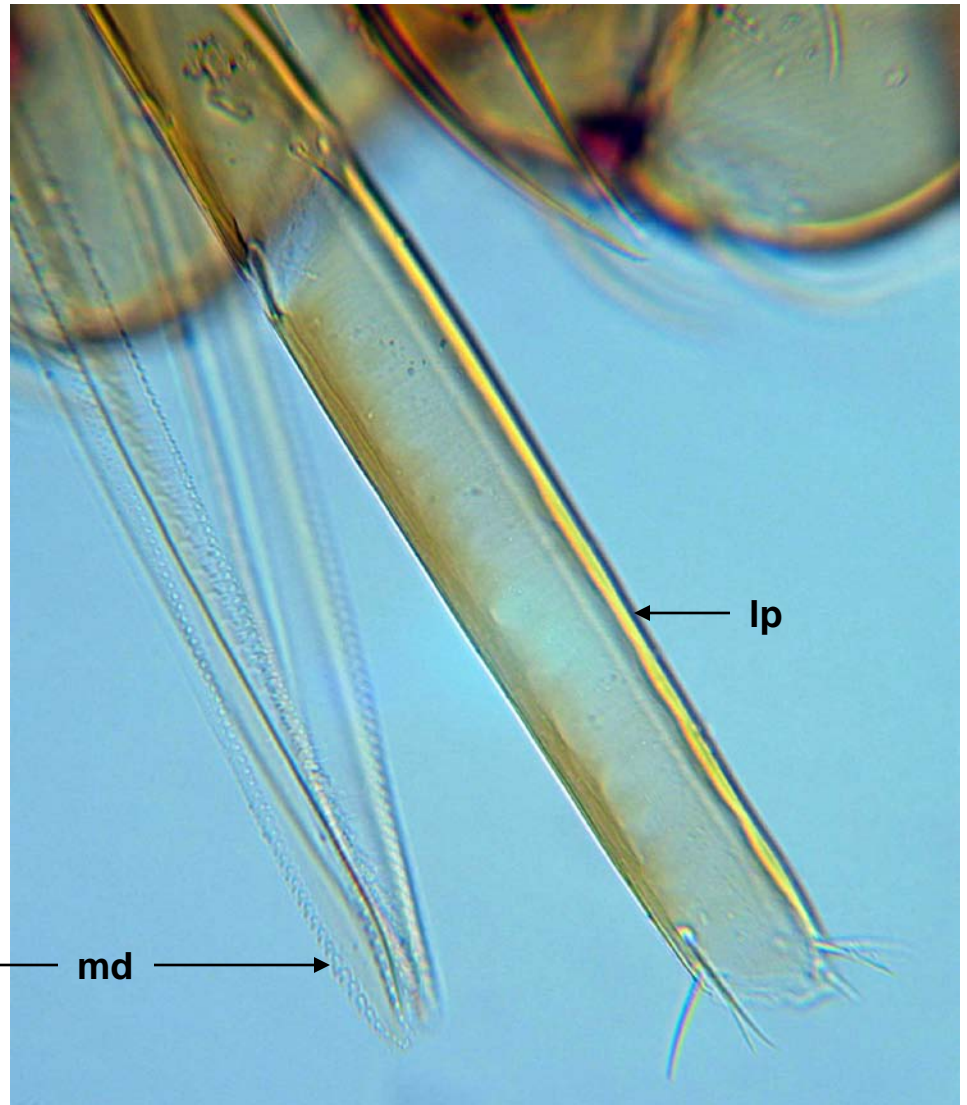
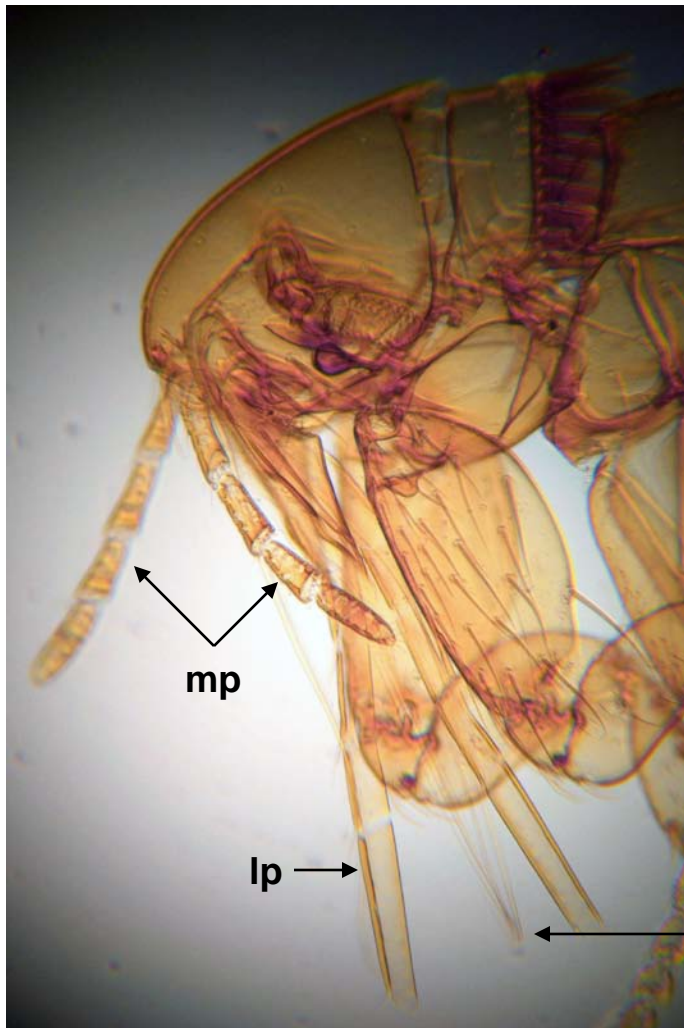
Oropsylla arctomys male; posterior showing genitalia. Long bristles on sternum VIII (arrow) characteristic of this species.



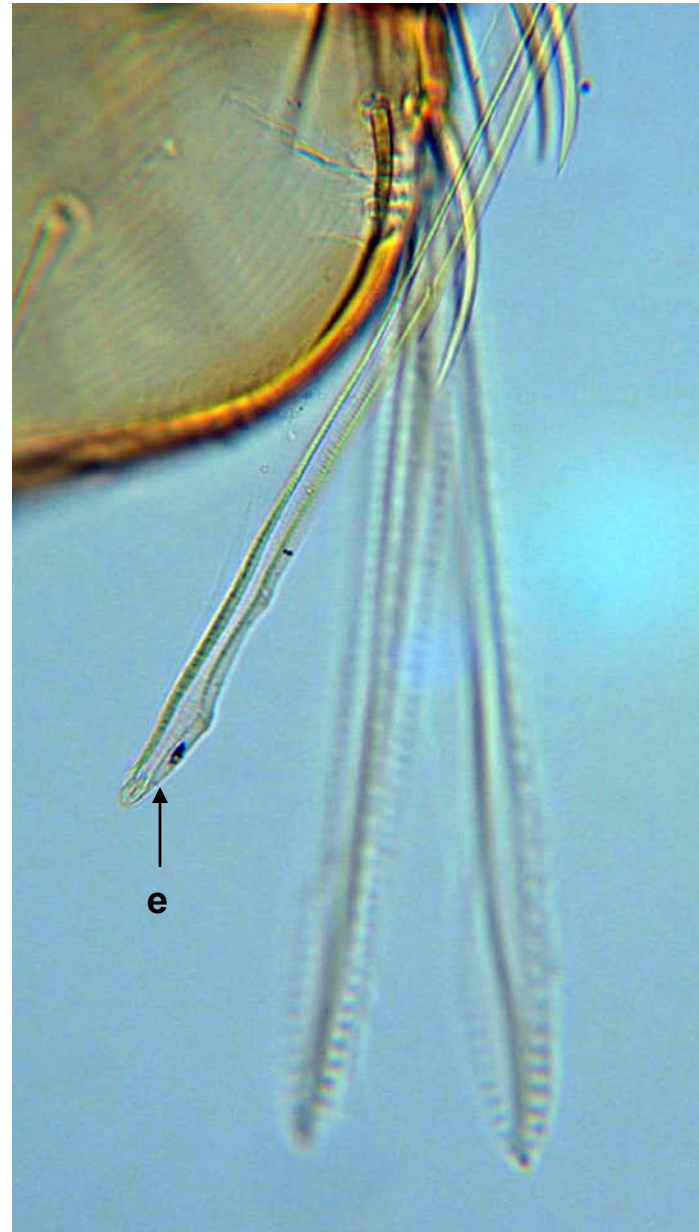
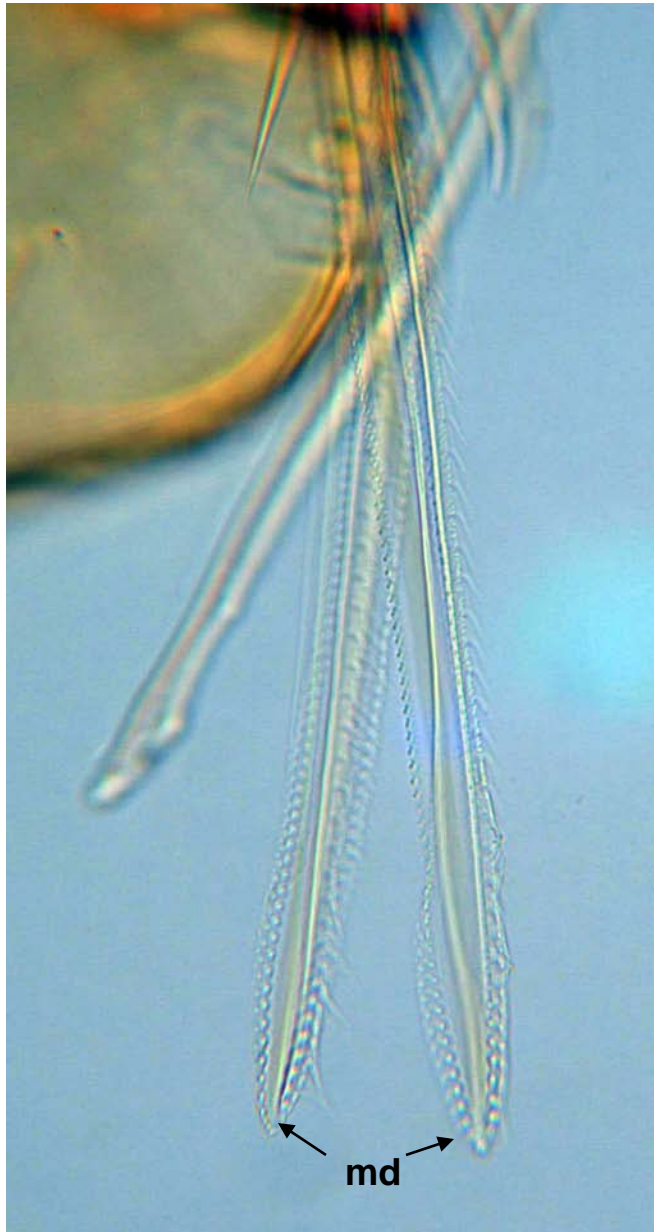
O. arctomys female showing head with distinct eye and antennae, but no genal ctenidium. Pronotal ctenidium in view.



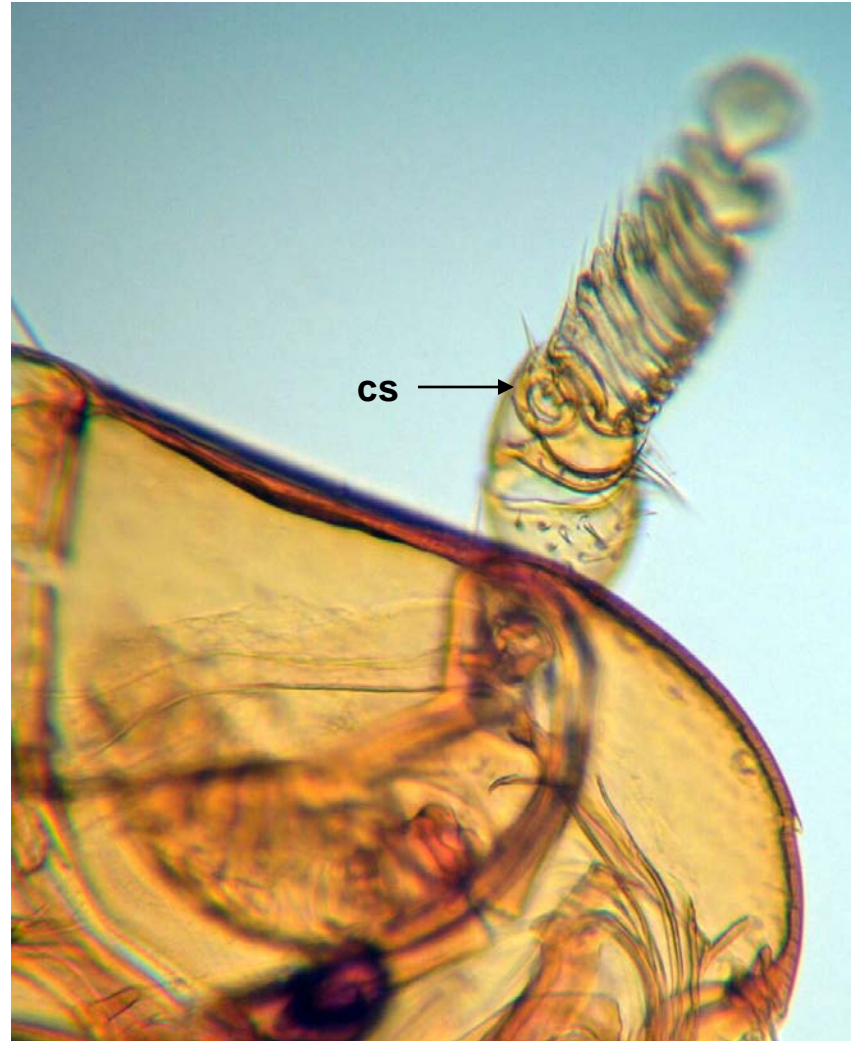
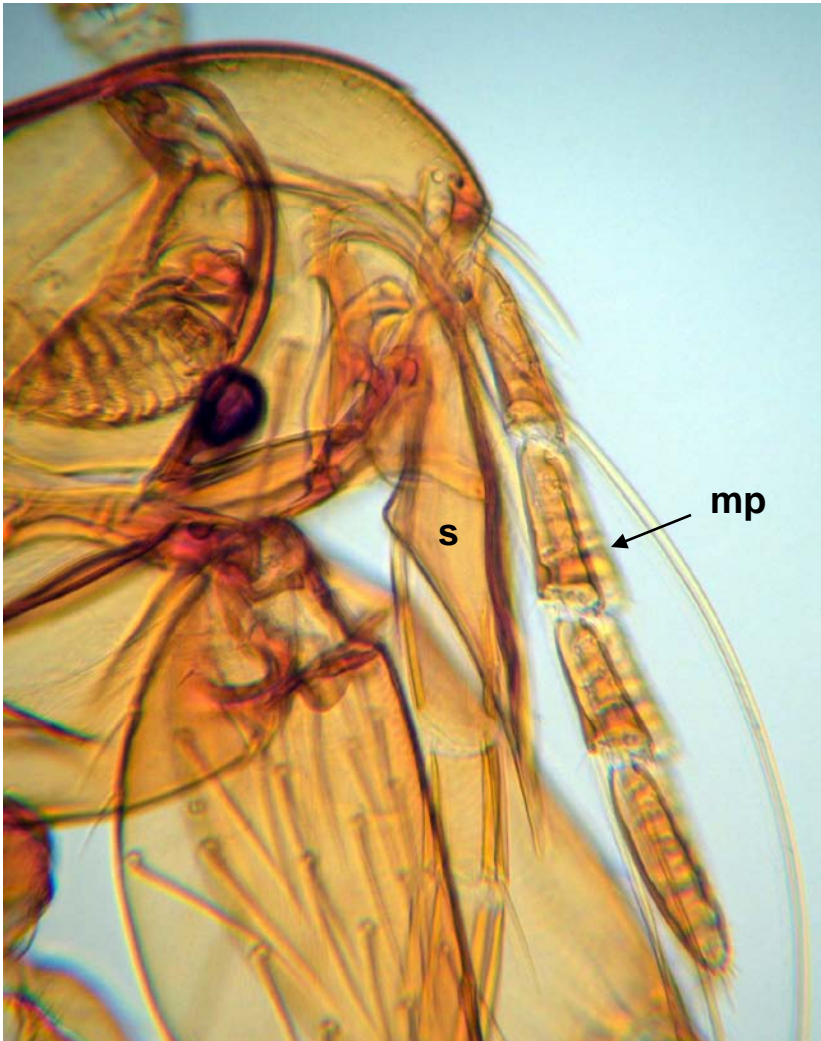
O. arctomys female showing head and mouthparts. Legend: lp, labial palp; md, mandible; mp, maxillary palp.



O. arctomys male showing epipharynx (e) and mandibles (md).



O. arctomys male head showing elongate stipes and copulatory sucker on inner surface of antenna. Legend: cs, copulatory sucker; mp, maxillary palp; s, stipes.



O. arctomys male posterior.

